



# PTSA

# NEWS

## Important Dates

**September 22-26**

PSAT/PLAN Test Sign-ups

**September 22-26**

3 on 3 Basketball Tourny @ lunch

**September 29 / October 1**

PSAT/PLAN Late Registration

**September 30**

No school - Local holiday

**October 2**

Progress reports mailed

**October 4/5**

MB Hometown Fair

**October 4**

SAT Test

**October 7**

College Fair - Redondo Union HS

**October 9-10**

No School - Local Holiday

**October 13**

PTSA Meeting -12:30pm  
Guidance Office Conf Rm

**October 18**

PSAT Test

**October 20-24**

Red Ribbon Week

**October 21**

In-N-Out Honor Roll Lunch

**October 23**

Choir, Band & Orchestra Fall Concert

**October 24**

Spirit Day - Stampede Day

**October 25**

PLAN Test  
ACT Test

**October 29**

Scholar Breakfast

**October 31**

Halloween Contest - Lunch

## Message from the Principal

*Dear Parents, Students, and Teachers,*

Is it a dream, or are we really at the end of our third week of school? We've already had two games this season.....so this must be real. I don't know about you, but in the fall I mark my time by the football schedule; and I have a strong feeling that I'm not the only one. I'd like to welcome everyone to come out and see the mighty Mira Costa Mustangs decimate the opposition, hear the band play, and see the dance and cheer teams perform. It's a lot of fun! We have three home games remaining: Newport Harbor on October 10th, Peninsula on October 31st, and Leuzinger on November 7th.

I have been very pleased with the smooth opening of school, especially as we have many new staff members, we initiated a new online registration program, and have scheduled many of our typical fall events, such as evening parent meetings and Back to School Night, earlier than usual.

We have had the good fortune to be granted almost four new teaching positions in math, science, social studies, and Spanish. These additions to our staff mean smaller class sizes, benefiting both teachers and students. We will be interviewing and hiring for these new positions and have begun to make the necessary changes to student schedules. Students have been wonderful through the change process.

We have already received two wonderful honors for which teachers, students and parents deserve the credit. First, Mira Costa was named as one of the top 12 public schools in Los Angeles by L.A. Magazine (September issue). It's important to note that there are 550 high schools in Los Angeles, which means we are in the top 2%, according to the magazine. In addition to great scores on both college admission tests and the state of California STAR tests, the magazine noted that Mira Costa has college placement records comparable to those of private schools in the LA area. Secondly, our API score rose 9 points this year. I was extremely pleased to see that our increases were in math and science where our teachers work hard teaching the state curriculum and preparing our students for the tests. Congratulations everyone!

Costa has so much more going for it than just high test scores. We would not be receiving these accolades without the concerted effort that we all make to create a school that offers the breadth of high-quality programs that Mira Costa provides its students. This level of excellence is not surprising considering the absolute dedication I see on a daily basis from our faculty and parent volunteers. I really think the key to our success is that we all love to be here and want the best for our students.

## A Crucial Vote on November 4th

There is a very important reason to cast your vote on November 4th, 2008. Measure BB, a Manhattan Beach school improvement measure, is on the November ballot to maintain the quality of our outstanding neighborhood schools WITHOUT raising your tax rate. (Voting for President is important too!)

Our schools perform in the top 4% statewide. In addition to beautiful beaches, top rated public schools make Manhattan Beach one of the most attractive towns in So. Cal for families to live—thus having a very positive effect on our real estate values. Measure BB will authorize school improvements that keep property values high, attract and retain the best teachers, and help our children continue to soar in academic achievement.

Measure BB is a bond measure but it will **NOT** raise property tax rates. Instead, the bond will use a financing option known as a “no tax rate increase extension.” Simply put, Measure BB extends the existing assessment authorized by voters in 2000 for an additional 12 years.

Funds from the bond are necessary for vital facility upgrades at 58-year old Mira Costa High School (MCHS). Our community previously supported a bond to upgrade schools but major areas of MCHS were not addressed and remain deteriorated and significantly outdated. We must finish the job. As with any project of this type, the longer we wait, the more expensive it will be. We need to act now.

In summary, Measure BB will:

- Replace original 1950's classrooms with new state-of-the-art science and math labs as well as renovations to general academic classrooms (English, foreign language and social studies)
- Renovate visual and performing arts classrooms
- Improve safety and efficiency by relocating, modernizing and centralizing student support services and areas where students congregate
- Enhance the career technical skills center, further supporting our productive and cost-efficient partnership with the Southern CA Regional Occupational Center (SCROC)
- Improve energy efficiency
- Upgrade deteriorated plumbing and restrooms
- Upgrade outdated wiring and technology

Additionally, Measure BB will serve a fiscally vital role by retiring \$13 million in old construction debt. As a result, \$1.3 million/year in school district General Fund monies will be available for essential educational needs, including attracting and retaining quality teachers throughout MBUSD.

Measure BB is a “Prop 39” bond which means that all funds generated by the measure will be strictly used to benefit MBUSD students and schools and can only be used for items on the approved project list. No money can be used for administrator salaries. An Independent Citizens’ Oversight committee and annual audits are mandatory. In fact, the District is currently requesting applications for this Citizens’ Oversight committee, and applications are available on the MBUSD website.

Your vote makes a difference. Please **vote YES** on **Measure BB** on November 4th.

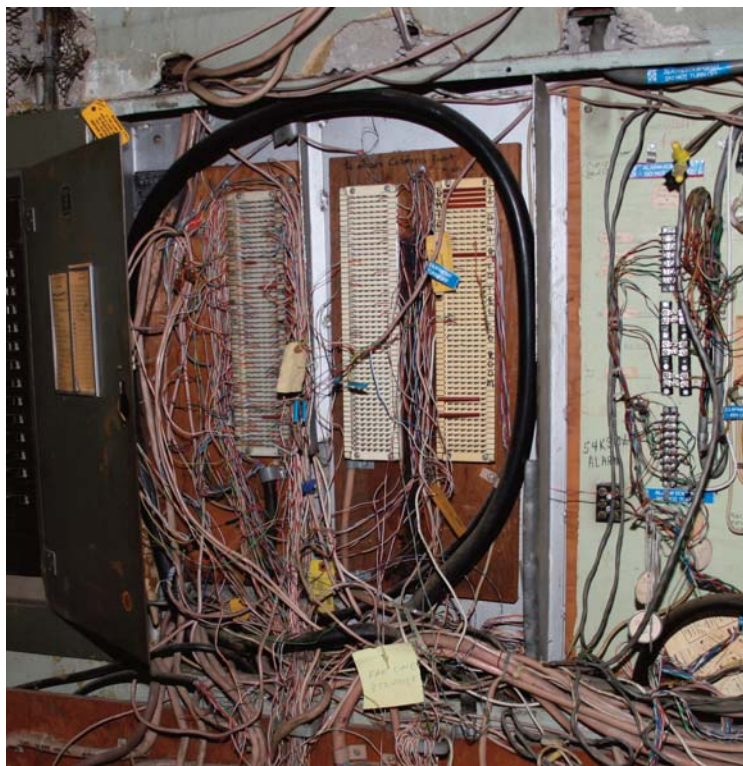
For more information about this bond measure and to find out how you can help, please visit <http://www.costayes.org>

Busy schedule?

Consider registering as a “vote-by-mail” voter. Complete your ballot at home and mail it in.

For information visit:

[http://www.sos.ca.gov/elections/elections\\_m.htm](http://www.sos.ca.gov/elections/elections_m.htm)



Phone closet at MCHS

## Principal's Message (continued from page 1)

One last item on my brag sheet. Please visit the new College and Career Center (CCC) website, [www.miracostacc.com](http://www.miracostacc.com). It is truly tremendous! I am amazed at the abundance of information available regarding both college and career planning. This website is one of the early accomplishments of our two new college and career counselors, Mrs. Gail Currey, and Mrs. Katherine Folkman, who would both love to have students stop by for a visit. These ladies began working over the summer to prepare the website and update the College and Career Center. I know that students will be amazed at the materials now available. Everything is up-to-date and organized. Also, especially for seniors, please visit the CCC website regularly to check on college visits. You don't want to miss the chance to learn about a favorite college or university firsthand. Many, many college/university representatives will be visiting Costa this fall.

It's wonderful to be back with all of you at the start of a new school year and I wish you all great success.

With Warm Regards,

*Julie Ruisinger*  
Principal

Please don't forget to give to the Costa PTSA and the Manhattan Beach Education Foundation. Both organizations do so much to benefit our students.

*If you have a child, you have a reason.*



## IN-N-OUT HONOR ROLL LUNCH Tuesday, October 21

In-N-Out will once again be cooking up fresh burgers for Mira Costa honor roll students during a special PTSA-sponsored recognition event on Tuesday, October 21. The In-N-Out trucks will serve lunch in the school's front plaza to all students who earned a weighted GPA of 3.5 or higher at Mira Costa during the second semester of the 2007-2008 school year. (Current freshmen who make the honor roll this semester will be able to participate in the spring In-N-Out event).

All eligible students must bring their Mira Costa I.D.s to the auditorium check-in area to participate. A complete listing of honor roll students is available online at the PTSA website.

The In-N-Out mobiles will begin serving lunch to school employees and eligible students beginning at 12:00 noon, and the rest of the honor roll students will be served during the 12:21 p.m. - 12:51 p.m. lunch period. Both students and teachers must show up in person to receive their lunches. Besides burgers, complimentary chips and drinks will be served. (Grilled cheese is available for non-burger lovers.)

**To help get the students "in-n-out" on time, the PTSA needs parent volunteers to help from 11:30 a.m. to 1:00 p.m.**

Please call Kathy Thorpe at 310/374-5344 or e-mail her at [konakkt@aol.com](mailto:konakkt@aol.com) if you are available to help and have a burger.

# MBEF

## THE COSTA ACADEMIC BOOSTER CLUB

### ARE YOU A MEMBER?

School is in full swing and volunteers across our seven campuses are working hard to raise \$2.8 million for MBEF to benefit your child.

*MBEF supported programs touch every child, every day.*

MBEF provides Costa with.....

The Librarian • College and Career Counselors • Science assistant  
Technology director and lab specialist • Substance abuse prevention and education program  
\$200,000 for elective courses • the AVID program

Please donate today by visiting [www.mbef.org](http://www.mbef.org)

## FROM THE PRESIDENT'S CORNER . . .

Welcome to the 2008-09 school year. We are off to a fantastic start. This November Manhattan Beach residents will vote on Measure BB—a bond measure to renovate MCHS facilities. I would like to take this opportunity to share an experience I had recently when taking a tour of MCHS hosted by Measure BB volunteers.

When it comes to Measure BB seeing is believing. If you are like most of us, you have never seen much more of Costa than the football field or Fisher Gym (recently remodeled by MBAF), the performing arts theater (actually an original building that received new seats several years ago) or the main administration building that faces Artesia. But these facilities do not tell the whole story. Look a little closer and you'll find dilapidated buildings, outdated wiring, plumbing and heating and overcrowded classrooms. Volunteers from Measure BB are offering tours of MCHS (sign up for one on [www.costayes.org](http://www.costayes.org)).

I encourage you to grab a friend or neighbor and see for yourself why Measure BB is not an option—it's a requirement.

Here's a brief sampling of the things you will witness on this tour:

- ◆ New computers located in a room that can not be wired properly so wires hang all over the room and across the floor.
- ◆ A phone closet, housed in the original administration building, with old wiring spilling out haphazardly.
- ◆ Science labs have too many students / too few lab tables. Take a closer look and you'll see very old lab tables with bubbled and scratched surfaces and a lot of equipment that no longer works properly.
- ◆ Wiring the campus for the internet has been implemented by running wires through conduit that sits on top of old, flat-roofed buildings. Pipes containing the wiring rest on wood blocks stacked four high to keep them from sitting in water that may pool after a rain.
- ◆ The cafeteria barely holds 400 students – there are nearly 2400 at Costa.
- ◆ The “quad” area is small and poorly designed, which means that students have to spread out around campus to find a place to eat and meet their friends. This presents an obvious security issue.
- ◆ And while you are walking on your tour be mindful of where you step. Walking paths around campus are in disrepair including areas where tree roots are breaking through concrete and asphalt.

Our district (parents, teachers and the administration) is dedicated to offering students an enviable education. And we have succeeded. MBUSD is ranked in the top four percent of school districts statewide and MCHS was recently voted one of the top 12 public high schools in the greater LA area by LA Magazine. Our graduates attend some of the most prestigious universities in the world and 98% of graduates go on to some type of higher learning.

It is time to bring the facilities into the 21st century and in-line with the academic programs that we work so hard to provide. The state allocates no funds for facilities. We can't even cover basic expenses like salaries with what the district receives from the state. It is only with generous donations to MBEF, the PTAs and MBAF that we are able to offer the children of our community a first-rate education.

Take a tour of MCHS. Tell your friends and neighbors to take a tour. I guarantee it will make a believer out of you as well.

Yours truly,  
Cindy Ellenberg  
PTSA President

**Vote yes on Measure BB on November 4th.**

To sign up for a tour please visit [www.costayes.org](http://www.costayes.org) or send an email to [tours@costayes.org](mailto:tours@costayes.org)



### ☆ Want to find out more about the ☆ Mira Costa PTSA?

- ☆ Check out our website: [www.mchsptsa.com](http://www.mchsptsa.com)
- ☆ Join our PTSA eNews Blasts . . . sign up on our web page
- ☆ Come to a PTSA meeting
- ☆ Volunteer at MCHS
- ☆ Contact the PTSA president: Cindy Ellenberg at [cindye@verizon.net](mailto:cindye@verizon.net)

## MIRA COSTA HIGH SCHOOL College & Career Center

### The CCC Website is Live!

*Your Ultimate Resource for College and Career Planning*

The Mira Costa High School College and Career Center (CCC) is a resource for students, staff, and parents for college and career planning. It is a place to get information about colleges and universities, testing and test preparation, financial aid and scholarships, career information, summer opportunities, and more.

The CCC is located in room 29 of the Administration Building on the second floor and is open from 7:30 a.m. to 3:30 p.m. on school days.

Students are encouraged to drop in before and after school, during nutrition, and during lunch. Parents are welcome by appointment only.

Parent and student programs will be held throughout the year. Check the website for dates and times.

Check it out today! [www.miracostacc.com](http://www.miracostacc.com)

### MUSTANG NEWS ROUNDUP

Stay informed with the  
Mustang News Roundup weekly email.

Are you receiving the Mustang News Roundup every Friday?

If not, check your spam / junk email folder and ask your host to unblock the [mc-info@manhattan.k12.ca.us](mailto:mc-info@manhattan.k12.ca.us) emails.

If you need to add your email address to the distribution list or your email address has changed, please email [mcinfo@manhattan.k12.ca.us](mailto:mcinfo@manhattan.k12.ca.us) and include the student's name and grade.

### Intouch Reminder

Please remember that **Intouch** is the primary communications tool that parents use to access their student's attendance, class schedule, course history, progress reports and grades.

Freshmen and new students should receive login/password information mid-to-late October.

If you need a new login/password please contact Shari Humphrey in the Costa office.

### College Testing and Admissions

*MBEF and the Costa College and Career Center*

*Welcome Adam Ingersoll of Compass Prep*

*October 2, 2008*

*7-8pm in the MCHS Auditorium*

Mr. Ingersoll will speak to MCHS parents and students about the college admissions testing and application process and the habits of highly successful college applicants.

*Attendees receive a free copy of the  
"College Admissions Testing Guide"*

Please visit the College and Career Center from 6-7pm for a reception before the seminar.

Meet our new counselors and see the amazing resources now available in the CCC.

### \$ So Many Ways to Save with \$ \$ the MCHS Cash Card \$

\$15 buys you one MCHS Cash Card, providing **discounts at some of your favorite local merchants for an entire year.**

Every student should have 1 - every household should have 2 or 3!

Save at Manhattan Car Wash, Subway, Amigos Tacos, Fatburger, Spyder, Surf Concepts, and more — every time you go! Just show your MCHS Cash Card at time of purchase and enjoy your discounts.

#### **EVERYONE SHOULD HAVE ONE.**

Send your self-addressed stamped envelope and check made out to MCHS PTSA for \$15 per card to:

Janine Bozeman

1207 19th Street, Hermosa Beach, CA 90254

Call with questions: (310) 376-6554

or email [J9Bozeman@aol.com](mailto:J9Bozeman@aol.com)

**Thanks for your support of MCHS  
and the PTSA!**

**Thank You to Our Many Volunteers!**



**Student Registration    Test Book Distribution**

Andree Friedman  
 Bill Seckinger  
 Colleen Egan  
 Dana Nutten  
 Darice Hawkins  
 Darlene Haezaert-Caraveo  
 Jan Kajija  
 Judy Carney  
 Julie Limbach-Jones  
 Karina Sam  
 Kathy Van Orden  
 Linda Ensbury  
 Linda Mederos  
 Lori Lersch  
 Marcia Whistler  
 Marie Brown  
 Marlene Rich  
 Mary Massey  
 Mary Claire Orenic  
 Maryann Munir  
 Patty Ellis

Paula Buege  
 Yvette Cavender  
 Patti Garrity  
 Patti Strange  
 James LaRossa  
 Libby Ayau  
 Darice Hawkins  
 Carol Rowe  
 Cecilia Verket  
 Robyn Rodolf  
 Shauna Valenzuela  
 Jeanie Hanley  
 Tracey Ells  
 Peggy Compton  
 Kathy Van Orden  
 Patty Ellis  
 Kelly Schmit  
 Denise Norden  
 Carol Hatley  
 Rhonda Somers  
 Maggie Dexter  
 Jerry Wilson  
 Heidi Barnett  
 Linda Ensbury  
 Marcia Whistler  
 Karen Kane  
 Kristen Muller  
 Vicki Garcia  
 Miyo Prassas  
 Michele Erickson  
 Nancy Hawley-Barnes  
 Alice Davis  
 Rania Zein  
 Leslie Carlin  
 Linda Farrell  
 Lori Meepos  
 Janine Bozeman

**Class Schedules**

Carol Strickley  
 Mimi Wong  
 Marina Trachy  
 Carol Thomas  
 Linda Harper  
 Rosella Yousef  
 Julie Limbach Jones  
 Vicki Asher  
 Patti Strange  
 Maria Wohlmuth  
 Lissen Gregory Schnak  
 Francey Morzicola-Seckinger  
 Maggie Dexter  
 Vicki Garfield  
 Jan Curran  
 Norma Tokushige  
 Patty Ellis  
 Joan Faulker

**School Directories**

Co-chairs Dave Zobel and Norma Tokushige would like to thank those who made this year's directory possible.

Data entry and endless proofing:

Cindy Ellenberg and Charlene Harding

Distribution:

Denise Norden, Jean VanZanten, Susan Ruberman, Bridgette Goodman and Link Crew students

**JOIN THE MCHS PTSA TODAY**

The MCHS PTSA provides funding for:

- PTSA Student Directory
- Student Service Scholarships
- Staff Development
- Scholar Quiz
- Students of the Month
- Students Participation at Capital Convoy and much more
- Freshman Portfolios
- School Supplies
- New Teacher Supplies
- In & Out Honor Roll Lunch
- Staff Development

To join the PTSA please contact Denise Norden at [denisenorden@roadrunner.com](mailto:denisenorden@roadrunner.com) or (310) 318-1396

If you are a PTSA member and *did not* pick up your directory(s) at back-to-school night please contact Bridgette Goodman at (310)-545-7859 or [bridgette@bridgettegoodman.com](mailto:bridgette@bridgettegoodman.com)



**Target Supports Education**

Do you have a Target REDcard?

Target donates 1% of all REDcard purchases at Target and Target.com to the school of your choice.

Sign-up today. It's easy and benefits our schools.

Visit [www.target.com](http://www.target.com) for more information.

Mira Costa's school ID # is 29275.

Thank you!



The education benefit is available with the Target Visa credit card, Target Credit Card and Target Check Card.



**Office Depot**

**5% Back to School Rewards**

Last school year, Mira Costa received over \$1,600 in free school supplies as a result of your purchases at Office Depot.

By giving our school name at the check-out register, 5% of your purchases come back to us. Please tell the cashier that you would like to credit your purchases to Mira Costa or give them our program ID# 70010618 and keep those rewards coming.

**Thank you for support of this program!**

# THE ROAD TO COLLEGE. YOU WISH.



Co-founder and principal of the Compass Education Group, *Adam Ingersoll* has been down this road often enough to know the twists and turns. Come hear what he's learned about test scores, admissions, planning and finding the right college. You'll also get a chance to meet Mira Costa's new college and career counselors *Katherine Folkman* and *Gail Currey*. If you're heading for college, think of tonight as your map.

To learn more, click [here](#).

*The MBEF Speaker Series Presents*

**ADAM INGERSOLL: THE ROAD AHEAD**  
**OCT. 2, 7:00 PM, MIRA COSTA AUDITORIUM.**

Open House, 6 pm, Mira Costa College and Career Center.  
Parent, teachers and high school students welcome. Admission: Free.  
Sponsored by MBEF, whose grants include support for the CCC.

**MBEF**

If you have a child, you have a reason.



# Support Grad Nite

# Buy Scrip!!

<p><b><u>Entertainment:</u></b>  Blockbuster (\$10) _____ (7%)  Pacific Theatres (\$5) _____ (10%)</p> <p><b><u>Gas Cards:</u></b>  Arco Gas (\$50) _____ (2%)  Shell Gas (\$25) _____ (1.5%)</p> <p><b><u>Home Repair &amp; Decorating:</u></b>  Bed Bath &amp; Beyond (\$25) _____ (7%)  Best Buy (\$25) _____ (2%)  Crate and Barrel (\$25) _____ (8%)  Home Depot (\$25) _____ (3%)  Linens and Things (\$25) _____ (8%)  Lowe's (\$25) _____ (4%)  Pier 1 Imports (\$25) _____ (9%)  Pottery Barn/William Sonoma (\$25) _____ (8%)</p> <p><b><u>Restaurants:</u></b>  Baskin Robbins (\$2) _____ (9%)  Burger King (\$10) _____ (4%)  California Pizza Kit. (\$10) _____ (4%)  Carl's Jr. (\$10) _____ (9%)  Chili's &amp; Macaroni Grill (\$25) _____ (11%)  Coffee Bean &amp; Tea Lf (\$25) _____ (9%)  Domino's Pizza (\$5) _____ (5%)  El Sombrero (\$20) _____ (10%)  Hibachi Restaurant (\$20) _____ (10%)  Islands (\$25) _____ (8%)  Jamba Juice (\$10) _____ (7%)  Kettle (\$10) _____ (15%)  Mama D's (\$20) _____ (20%)  Manhattan Bread &amp; Bagel (5\$) _____ (10%)  Olive Garden (\$25) _____ (9%)  Peet's Coffee (\$20) _____ (8%)  Pick Up Stix (\$25) _____ (12%)  Starbucks Coffee (\$25) _____ (7%)</p>	<p><b><u>Specialty Stores:</u></b>  Barnes &amp; Noble (\$25) _____ (9%)  Banana Republic/GAP (\$25) _____ (9%)  Bath &amp; Body Works (\$10) _____ (13%)  Blue Pacific Aesth. Med. Grp. (\$100) _____ (10%)  Borders (\$25) _____ (9%)  Claire's (\$10) _____ (9%)  Cold Stone Creamery (\$10) _____ (8%)  Express (\$25) _____ (13%)  Glen Ivy Day Spa (\$50) _____ (10%)  Rocky Mtn Choc. Factory (\$10) _____ (11%)</p> <p>See's Candy 1lb (\$15) _____ (25%)  Sephora (\$20) _____ (4%)  Spyder Surf Shop (\$20) _____ (10%)  Surf Concepts (\$20) _____ (10%)  Toys R Us (\$20) _____ (1.5%)  Strand Cleaners (\$100) _____ (10%)</p> <p><b><u>Department Store:</u></b>  Macy's (\$25) _____ (10%)  Macy's (\$100) _____ (10%)</p> <p><b>**May not be used to pay Macy's bill</b></p>
<p><b>SUBTOTAL (A):</b> _____</p>	<p><b><u>SUBTOTAL</u></b> _____  <b><u>ADD **SUBTOTAL (A)**</u></b> _____</p> <p><b>TOTAL Amount DUE:</b> _____</p>
	<p style="text-align: center;">***** NOTE: *****</p> <p><b><u>ORDERS DUE BY Nov 17<sup>th</sup></u></b>  <b><u>DELIVERED WEEK OF Dec 15<sup>th</sup></u></b></p> <p><b><u>MAIL TO:</u></b></p> <p><b>Patti Strange</b>  <b>1043 11th Street, MB 90266</b></p> <p><b>Questions? Call, 545-4496</b>  <b>Checks payable: MCHS GRAD Nite</b></p>
<p><b>NAME:</b> _____ <b>PHONE:</b> _____</p>	
<p><b>ADDRESS:</b> _____ <b>CHECK AMOUNT:</b> _____</p>	
<p><b>SECURE mailbox drop: Y / N</b></p>	<p><b>Best time to Deliver:</b> _____</p>